



CREATING A CLEANER, SAFER, HEALTHIER WORLD.

EQUIPMENT



# T300

## WALK-BEHIND FLOOR SCRUBBER

Delivering high performance, consistent results for virtually any hard surface condition while lowering cleaning costs

Scan this cover for virtual demo or download App



## KEY T300 SCRUBBER FEATURES BUILT ON COMMITMENT, COLLABORATION, SERVICE, AND SUPPORT BY A CIRCLE OF EXPERTS SURROUNDING OUR CUSTOMERS



- **On-board machine instructions** help ensure machine is operated in a safe manner for better results, simplified training, and reduce cost to clean.
- **Insta-Click™** patent-pending head allows TennantTrue® pads and brushes to be installed ergonomically, resulting in a safer, faster, low-touch installation.
- **Vac motor** allows machine to clean using as low as 65 dBA for a safer cleaning environment.
- **Orbital head** delivers chemical free floor stripping, reduces water consumption and the need to handle caustic stripping chemicals.
- **Squeegee design** helps ensure dirt and soils are removed from the floor for minimum risk of slip-and-fall accidents and enables faster, easier installation of replacement TennantTrue® squeegee blades.
- **Easy fill port** makes filling the unit simpler, faster, and reduces the chance of spills; and the integrated hose clip keeps the hose in place allowing the operator to work on other tasks during the filling process.
- **Flow control valve** reduces the risk of contact with dirty recovery water and helps to control the flow rate when draining. It also decreases the need for secondary cleaning operations caused by spills.
- **Battery venting** with onboard charger fan and integrated venting allows the batteries to be charged safely with the lid closed.
- **Optimal down pressure and RPM** improves cleaning performance.
- **Accessory tray** allows you to keep the cleaning supplies you need at hand, reducing trips to the janitor closet.
- **Yellow touch points** helps prevent breakdown and simplifies preventative maintenance and training requirements.
- **New machine electronics** allow the machine to do daily cleaning of finished concrete surfaces and works with 3M™ Trizact™ System.
- **Programmable Zone Settings™** for standardization of cleaning processes.

## IMPROVE THE EFFECTIVENESS OF YOUR CLEANING RESOURCES, INVESTMENTS, AND OPERATIONS WITH NEW SUSTAINABLE TECHNOLOGIES.



### THE T300 SCRUBBER PROVIDES THE RIGHT SOLUTION FOR YOUR SPECIFIC APPLICATION WITH A VERSATILITY THAT IS UNMATCHED IN THE INDUSTRY.



#### REDUCE COST TO CLEAN

Improved and durable components extend machine life and reduce cost of ownership.



#### IMPROVE HEALTH AND SAFETY

Innovative features help protect health and safety of your operator, building occupants, and the environment.



#### ENHANCE FACILITY IMAGE

Effective scrubbing capabilities help to maintain a consistently clean appearance of your facility floors.



#### MINIMIZE ENVIRONMENTAL IMPACT

Use of ec-H2O NanoClean® reduces the consumption of daily floor cleaning detergents to help meet your sustainability goals.



# INSIDE THE T300

Hygenic® tanks allow for easy access when cleaning to help reduce mold, bacteria and other contaminants that can grow in enclosed tanks

Vacuum motor allows machine to clean as low as 65 dBA and improves water recovery

Easy fill port makes filling the unit simpler, faster and reduces the chance of spills

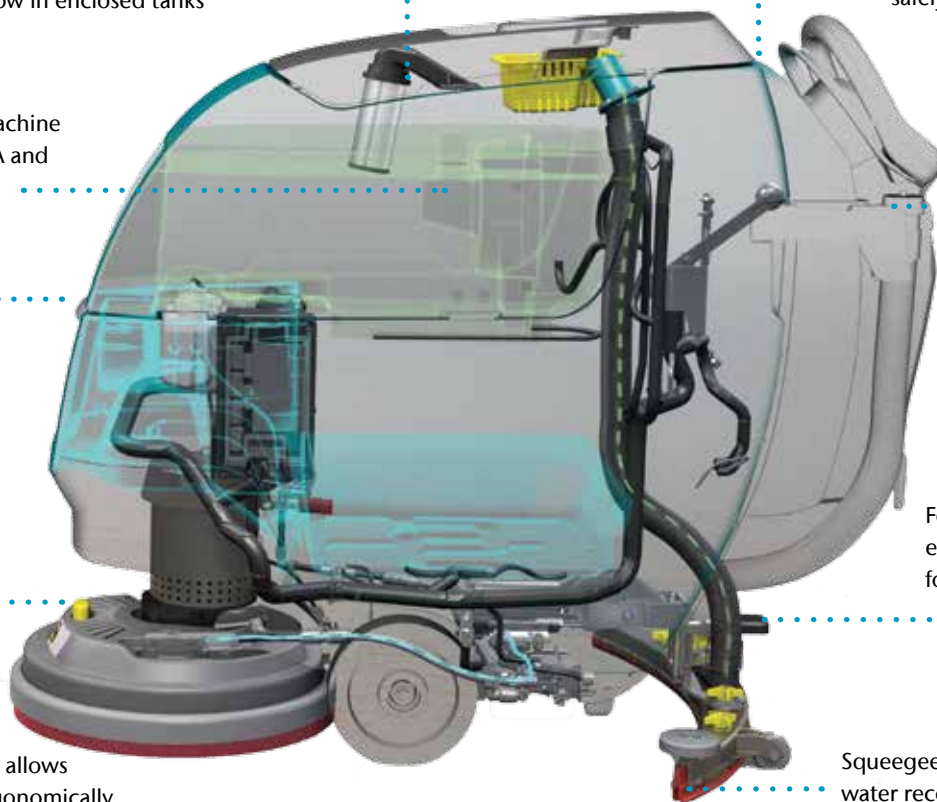
Insta-Click™ magnetic head allows pads and brushes to be ergonomically positioned and results in faster installation

On-board charger with fan and integrated venting allows batteries to charge safely with lid closed

Optional flow control valve reduces risk of contact with dirty recovery water and helps control drain flow rate

Foot activated squeegee is easy and more ergonomic for the operator

Squeegee provides excellent water recovery to help reduce slips and falls

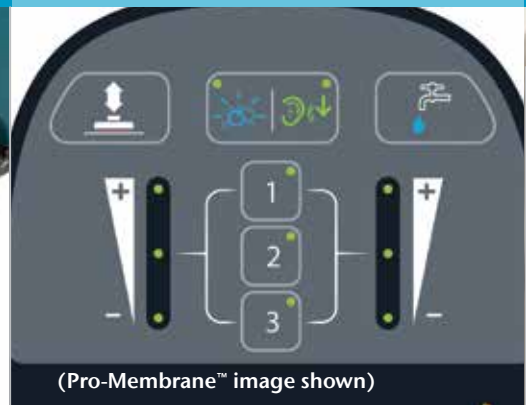


ec-H2O NanoClean® with optional Severe Environment™ Switch eliminates secondary cleaning operations that could increase slip and falls.

Insta-Click™ contains powerful magnets for easy, low-touch cleaning tool attachment and removal.

Quiet-Mode™ reduces noise levels as low as 58 dBA for daytime cleaning without disruption. Perfect for healthcare, education, and office cleaning.

KEY FEATURES



## ENGINEERED FOR PRODUCTIVITY AND VERSATILITY

### INNOVATIVE TECHNOLOGY THAT DRIVES DIFFERENTIATION IN YOUR FACILITY

The T300 scrubbers have multiple machine head types to fit your cleaning applications and optimize cleaning performance for specific areas.



Dual Cylindrical:  
20 in / 500 mm



Orbital:  
20 in / 500 mm



Single disk:  
17 in / 430 mm &  
20 in / 500 mm



Dual disk:  
24 in / 600 mm

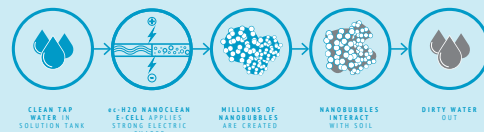
### EXCLUSIVE TECHNOLOGY

(optional cleaning innovation)



ec-H2O NanoClean® technology electrically converted water is created by an on-board e-cell that generates millions of very tiny microscopic bubbles known as nanobubbles that promote the cleaning efficacy of the solution.

This next generation solution offers the same great benefits of the first generation and now cleans better and cleans more soils in more applications. The name NanoClean, refers to the generation of nano-scale bubbles that are an important part of the cleaning mechanism.



Optional Electronic Pro-Membrane™ and Pro-Panel™ Controls provide for easy standardized cleaning processes.

The T300 along with the 3M™ Stone Floor Protection System provides a complete floor care process that restores the natural beauty of your porous stone and produces a remarkable, long-lasting shine.



(LCD Pro-Panel™ image shown)



3M™ Trizact™  
Diamond HX Discs

# T300 WALK-BEHIND FLOOR SCRUBBER

	SINGLE DISK		SINGLE DISK		DUAL DISK	CYLINDRICAL	ORBITAL
	17 IN/430 MM PAD ASSIST	17 IN/430 MM SELF-PROPEL	20 IN/500 MM PAD ASSIST	20 IN/500 MM SELF-PROPEL	24 IN/600 MM PROPEL	20 IN/500 MM SELF-PROPEL	20 IN/500 MM SELF-PROPEL
Control panel							
Membrane™ Panel		Standard		Standard	Standard	Standard	Standard
Pro-Membrane™ Panel		Optional		Optional	Optional	Optional	Optional
Pro-Panel™		Optional		Optional	Optional	Optional	Optional
Productivity (per hour)							
Theoretical Max		17,000 ft²/1,579 m²		20,000 ft²/1,858 m²	24,000 ft²/2,230 m²	20,000 ft²/1,858 m²	20,000 ft²/1,858 m²
Estimated Coverage*							
Conventional	9,340 ft²/868 m²	12,453 ft²/1,157 m²	11,208 ft²/1,041 m²	14,943 ft²/1,388 m²	18,264 ft²/1,697 m²	14,943 ft²/1,388 m²	14,943 ft²/1,388 m²
ec-H2O NanoClean®	9,668 ft²/898 m²	12,891 ft²/1,198 m²	11,602 ft²/1,078 m²	15,469 ft²/1,437 m²	18,906 ft²/1,756 m²	15,469 ft²/1,437 m²	15,469 ft²/1,437 m²
<b>BRUSH DRIVE SYSTEM</b>							
Scrub motor		24 VDC, 1 hp/0.75 kW		24 VDC, 1 hp/0.75 kW	24 VDC, 1 hp/0.75 kW	24 VDC, 1 hp/0.75 kW	0.6 hp/0.45 kW
Brush/pad RPM		230 rpm		230 rpm	285 rpm	1,065 rpm	2,200 rpm
Brush/pad pressure		47, 71, 86 lbs/21, 32, 39 kg		51, 76, 90 lbs/23, 35, 41 kg	57, 81, 97 lbs/26, 37, 44 kg	53, 60, 64 lbs/24, 27, 29 kg	63, 92, 109 lbs/29, 42, 49 kg
<b>SOLUTION/RECOVERY SYSTEM</b>							
Solution tank capacity		11 gal/42 L		11 gal/42 L	11 gal/42 L	11 gal/42 L	11 gal/42 L
Recovery tank capacity		14 gal/53 L		14 gal/53 L	14 gal/53 L	14 gal/53 L	14 gal/53 L
Vacuum motor		24 VDC, 0.6 hp/0.47 kW		24 VDC, 0.6 hp/0.47 kW	24 VDC, 0.6 hp/0.47 kW	24 VDC, 0.6 hp/0.47 kW	24 VDC, 0.6 hp/0.47 kW
Vacuum waterlift		42 in/1067 mm		42 in/1067 mm	42 in/1067 mm	42 in/1067 mm	42 in/1067 mm
Vacuum waterlift with Quiet-Mode™		28 in/711 mm		28 in/711 mm	28 in/711 mm	28 in/711 mm	28 in/711 mm
<b>CLEANING TECHNOLOGY</b>							
Conventional		Standard		Standard	Standard	Standard	Standard
ec-H2O NanoClean		Optional		Optional	Optional	Optional	Optional
Severe Environment™ (with ec-H2O NanoClean)		Optional		Optional	Optional	Optional	Optional
Severe Environment detergent tank capacity (optional only with ec-H2O NanoClean)		0.4 gal/1.5 L		0.4 gal/1.5 L	0.4 gal/1.5 L	0.4 gal/1.5 L	0.4 gal/1.5 L
<b>BATTERY SYSTEM</b>							
System voltage		24 volt		24 volt	24 volt	24 volt	24 volt
Battery types (Wet 105AH, Wet 130AH, Wet 150AH, Sealed AGM 140AH)		2 required		2 required	2 required	2 required (150AH wet & 140AH sealed only)	2 required
Battery run time (up to hours)**	3.4	3.1	2.8	2.6	2.9	2.5	3.8
On-board charger		Standard		Standard	Standard	Standard	Standard
Off-board charger		Optional		Optional	Optional	Optional	Optional
<b>MACHINE SPECIFICATIONS</b>							
Length		51.25 in/1,302 mm		54 in/1,372 mm	51.75 in/1,314 mm	50.50 in/1,283 mm	49 in/1,245 mm
Width		20 in/500 mm		22 in/559 mm	26 in/660 mm	25 in/635 mm	20.5 in/521 mm
Height		43.10 in/1,095 mm		43.10 in/1,095 mm	43.10 in/1,095 mm	43.10 in/1,095 mm	43.10 in/1,095 mm
Weight (without batteries)	220 lbs/98 kg	230 lbs/104 kg	230 lbs/104 kg	240 lbs/109 kg	250 lbs/113 kg	250 lbs/113 kg	255 lbs/116 kg
Weight (with batteries)	366 lbs/166 kg	390 lbs/177 kg	376 lbs/171 kg	400 lbs/181 kg	410 lbs/186 kg	410 lbs/186 kg	415 lbs/188 kg
Sound level (operator's ear)***		64.9 dBA		64.9 dBA	66.5 dBA	64.7 dBA	66.4 dBA
Quiet-Mode (operator's ear)***		57.8 dBA		57.8 dBA	59.1 dBA	61.3 dBA	57.6 dBA

## WARRANTY

See your local representative for warranty information

\* Estimated coverage rates use the practical speed and empty/fill time standards from the 2004 ISSA Cleaning Times handbook.

\*\* Run times are based on continuous scrubbing run times.

\*\*\* Sound levels per ISO 11201 as recommended by the American Association of Cleaning Equipment manufacturers & OSHA.

Specifications subject to change without notice.



ec-H2O NanoClean® technology is NFSA (National Floor Safety Institute) Certified



ec-H2O NanoClean technology is registered by NSF International

## SEEING IS BELIEVING

For a demonstration or additional information,  
call +1.800.553.8033 or email [info@tennantco.com](mailto:info@tennantco.com)

Tennant  
701 North Lilac Drive  
Minneapolis, MN 55422 USA

USA/Canada: +1.800.553.8033  
Quebec: +1.800.361.9050  
Overseas: +1.763.540.1315

1.063.001.am.en T300 Brochure 6/16

©2016 The Tennant Company logo and other trademarks designated with the symbol "®" are trademarks of Tennant Company registered in the United States and/or other countries. Tennant Company's products are sold and serviced through subsidiaries of Tennant Company and distributors. All rights reserved.

[www.tennantco.com](http://www.tennantco.com)  
[info@tennantco.com](mailto:info@tennantco.com)